

CT DEEP **2017**
FISHING REPORT NUMBER 10
6/15/2017



Northern Pike (*Esox lucius*)



YOU CAN FIND US DIRECTLY ON FACEBOOK. This page features a variety of information on fishing, hunting, and wildlife watching in Connecticut. The address is www.facebook.com/CTFishandWildlife.

SHARE THE EXPERIENCE
Take someone fishing

INLAND REPORT

Sunday (Father's Day) is a Free Fishing License Day. Anyone can fish for free with the **FREE 1-day license**. Free licenses are available via our mobile friendly licensing system (www.ct.gov/DEEP/sportsmenlicensing)

LARGEMOUTH BASS fishing has slowed some, with fishing generally fair. Places to try include Lake McDonough, Bantam Lake, Lake Saltonstall, Highland Lake, Candlewood Lake, Mudge Pond, Cedar Lake, Shetucket River, Lower/Upper Moodus Reservoir, Winchester Lake, Rainbow Reservoir, Pachaug Pond, Quaddick Reservoir, Wood Creek Pond, Mono Pond, Congamond Lakes, Lake Wononskopomuc, Hopeville Pond, Silver Lake, Batterson Park Pond, Gardner Lake, Pickerel Lake, Mashapaug Lake, Billings Lake, Maltby Lakes, Stillwater Pond, Ball Pond, Red Cedar Lake and West Hill Pond.

Tournament angler **Tournament angler** reports are from Amos Lake (slow to fair for most, interestingly, average weight per fish was 2.35 lbs for the 27 fish caught, but the lunker was only 2.84 lbs), Mansfield Hollow Reservoir (fair at best, not much size, with the average weight a bit over 1 lb, with a 3.1 lb lunker), Moodus reservoir (slow to fair, not much size with 2.3 lb, 2.1 lb, 1.4 lb and 2.1 lb lunkers), Pachaug Pond (good for most, 4.04 lb lunker), Connecticut river (fair for most, not bad for size, with 3.83 lb, 2.8 lb, 2.2 lb and 2.1 lb average fish weights and 3.99 lb and 3.83 lb lunkers), Candlewood Lake (fair to good, with 5.11 lb, 4.32 lb, 4.3 lb and 3.02 lb lunkers), Highland Lake (fair fishing, with a 4.38 lb lunker – average fish weight was only 1.12 lbs), Lake Lillinonah (tough to slow, 4.99 lb and 2.67 lb lunkers), and Lake Zoar (slow for largemouth).

SMALLMOUTH BASS are reported at Colebrook River Lake (some good reports recently), Candlewood Lake (it's getting a lot harder to find smallmouth recently), Lake Lillinonah (tough here also) and Lake Zoar (some action). **Tournament angler** reports are from Candlewood Lake (slow for smallmouth, 3.3 lb

THIS SUNDAY (FATHER'S DAY) IS A FREE FISHING LICENSE DAY

Remember when dad used to pack you and the fishing gear into the station wagon and head to the hills for the day to fish?

Take Dad fishing for the day. No license –No worries, this Sunday is the first of 2 free fishing license days.

Anyone can obtain a free one-day fishing license to fish each of these days.

The free 1-day license for fishing this Sunday, June 18, 2017 is now available and licenses for the August 12 date will be available starting on July 23, 2017. Free licenses are available through our mobile friendly online system at www.ct.gov/deep/sportsmenlicensing

lunker), Lake Lillinonah (slow, 3.01 lb lunker), Lake Zoar (slow to fair, 2.5 lb lunker), and the Connecticut River (a few, including a 4.03 lb lunker).

NORTHERN PIKE fishing is fair to good. Places to try include Pachaug Pond, Bantam Lake, Mansfield Hollow Reservoir, Connecticut River, the small impoundments along the upper Housatonic River, and Winchester Lake. Weedlines early and late in the day are producing some nice size pike.

WALLEYE. Some action at Squantz Pond and Lake Saltonstall.

CALICO BASS AND SUNFISH: There are still a few reports of post-spawn mortality here and there. Some level of mortality is expected, as the spawning is stressful time, leaving the fish vulnerable to infection and less ability to handle rising water temperatures. Please see our [Post-Spawn](#) fact sheet on our web site. Despite the natural mortality, fishing remains good as fish are “getting back to normal” following the spawn.

CATFISH are providing some nice action at Community Fishing Waters including Birge Pond, Lake Wintergreen, Pickett’s Pond, Mohegan Park Pond, Keeney Park Pond, and Center Springs Pond. Catfish Management lakes like Lower Bolton Lake, and Quinebaug Pond are also yielding some catches. Try live shiners, chunk bait, or night crawlers.

TROUT- RIVERS & STREAMS - Conditions for the weekend should be fairly good. Flows are very fishable, generally at or a bit below typical mid-June levels (see [stream flow graphic on page 4](#)) and they continue to drop. Nice catches continue from rivers like the West Branch Farmington River, Farmington River, Housatonic River, Blackberry River, Natchaug River, Salmon River, Yantic River (TMA), Salmon River TMA, Hammonasset River, and Naugatuck River TMA (very good).

Farmington River - Fishing has been very good and conditions for the weekend should be as well. West Branch flows are moderate, clear and quite fishable (currently 318 CFS at Riverton, with the Still River adding 40 CFS). The heat wave earlier this week triggered some nice evening hatch activity.

Rock Snot is “blooming”. *Cymbella janischii* is a close relative of Didymo and has been introduced to the West Branch Farmington River (first noticed in 2011). *C. janischii* is native to the Pacific Northwest and not naturally found on the Eastern seaboard.

Currently this type of “Rock Snot” is very abundant and should continue to grow through July. The primary area of the river is from New Hartford upstream to Riverton. Note: Didymo is still present primarily in the West Branch above the Still River in Riverton. To help prevent the spread to other rivers and

ZEBRA MUSSELS REMINDER

Zebra mussels are now found in a number of locations scattered throughout the Housatonic River and its impoundments including Lake Lillinonah (*since 2010*), Lake Zoar (*since 2010*) and Lake Housatonic (*since 2011*).

Prior to their discovery in Lakes Lillinonah and Zoar in 2010, zebra mussels had been found (1998) in CT only in East Twin Lake and West Twin Lake (Salisbury). Anglers fishing in any of these waters and western Connecticut in general **should use extra care to avoid transporting water, aquatic vegetation, and possibly zebra mussels to new locations.** Information

For more information including precautions that should be taken to prevent the spread of zebra mussels to additional waters, visit www.ct.gov/deep/invasivespecies or the Aquatic Invasive species section of the 2017 CT angler’s Guide (www.ct.gov/deep/anglersguide).



Cymbella janischii (rock snot) as observed on June 14, 2017 in the West Branch Farmington River, Barkhamsted.

streams, all anglers should take extra care to clean and dry waders that have been in contact with rock snot. We recommend having a pair just for use only in the Farmington River.

Hatches/patterns the main activity is happening late afternoon and early evening with several different insects including black or tan caddis (#18-#20) and a variety of mid-sized mayflies. Patterns to try include *Vitreus* [a.k.a. pale evening dun] #14-16, from 5:00 pm to dark, Tan Caddis (#14-16) good all day, Sulfurs, (*Invaria* #14-16 hatches mid-day and *Dorothea* #16-18), Light Cahill (#12-18), March Brown nymphs (#10-14, during the day), Gray Fox (#10-14, afternoon), Blue Wing Olives (#18-24, mid-late afternoon), Midges (#20-32) and Pale Evening Duns (*Epeorus vitreus* #14-16, afternoon & early evenings). March Brown, Sulphur & Rusty Spinners are falling in the evenings.

Housatonic River - Fishing was good last week and should be even better this weekend as flows have cleared and dropped precipitously after the rainy start to summer (currently 605 CFS at Falls village and 985 CFS at Gaylordsville). Morning water temperatures are in the middle to upper 60's°F. Insect activity is good with spinner falls in the afternoon/evening.

Hatches/patterns include Sulphurs (#14-18, evening), Blue Wing Olive (#16-18, cloudy days, early morning; spinner fall in evening), Cahill (#14, evenings), Adams (#12-16, evening), March Brown (#10-12, afternoon) and Gray Foxes (#14-16). Green caddis (#14-18, early morning & evening) are on the water. Go under the surface with wooly buggers or a variety of flashy streamers (to get the big 'bows interested).

TROUT-LAKES & PONDS - Trout fishing continue to be marginal to slow. Places to try include West Hill Pond, Lake McDonough, West Branch Reservoir, Lake Wonosopomuc, Squantz Pond, Mashapaug Lake, Colebrook Reservoir, East Twin Lakes, Crystal Lake (good, target 15-20 feet over 40 feet of water, 3 colors), Long Pond, Cedar Lake and Black Pond (Woodstock).

CONNECTICUT RIVER

The river should be quite fishable this weekend. Flows continue to clear and have dropped steadily from last week's difficult to fish and boat levels, and are now a bit below typical mid-June levels. Schoolie **STRIPED BASS** were being found throughout the river, with some spotty action for keepers being reported. The mouth is hit or miss for good striper action. Finding a school of bunker will help you get onto the jumbo bass. **CHANNEL CATFISH/WHITE CATFISH** reports were quiet last week but have picked up again this week. Good locations to try include Kenney Cove, the Haddam Meadows area, and Salmon River Cove. Some **NORTHERN PIKE** action reported from the Haddam Meadows area.

REMINDER TO ANGLERS-

FISHING IN OR CASTING INTO PERMITTED SWIM AREAS IS PROHIBITED.

State regulations prohibit fishing in or into a swim area that has been permitted by DEEP. Additionally, vessels cannot be operated within a permitted swim area, and there's a 100 foot "no-wake" zone around the perimeter. Swim areas that have been permitted by DEEP will be marked by white buoys with orange markings, and there should be a permit number posted on the buoys. They may or may not have small orange barrier floats to further demarcate the area. Should questions arise concerning the validity of the swim area (*no permit numbers or the area appears to have been changed/enlarged or keeps moving*), please contact DEEP's Boating Division at 860-434-8638.



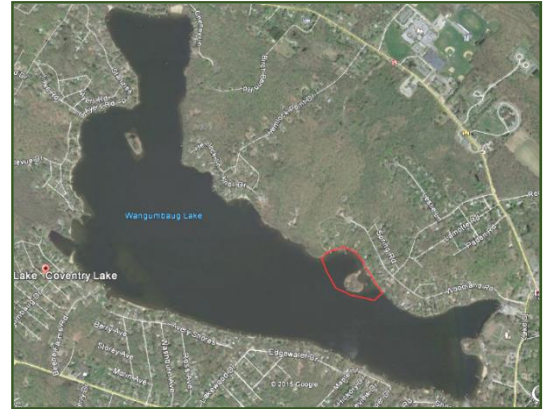
NOTES & NOTICES:

BRANFORD RIVER (boat launch). The Branford River state boat launch continues to be closed for renovations. Alternative nearby launch sites include the Guilford Town boat launch and the East River State boat launch, both in Guilford.

CONNECTICUT RIVER (invasive species alert). Hydrilla was recently found in the main stem Connecticut River in Glastonbury (near Glastonbury's Riverfront Park & Boathouse). See the Coventry Lake entry below for what river users should do to prevent spread of this invasive plant to other waterbodies.

COVENTRY LAKE (invasive species alert). Hydrilla, a very highly invasive aquatic plant, has been found growing in Coventry Lake. All lake users should take extra care to check and clean their boats (including canoes, kayaks and rowing sculls), trailers, and fishing equipment before leaving the

Coventry Lake (Wangumtaug Lake) boaters should avoid the area outlined in red to avoid fragmenting and spreading hydrilla. This is only area in the lake where hydrilla has been found.



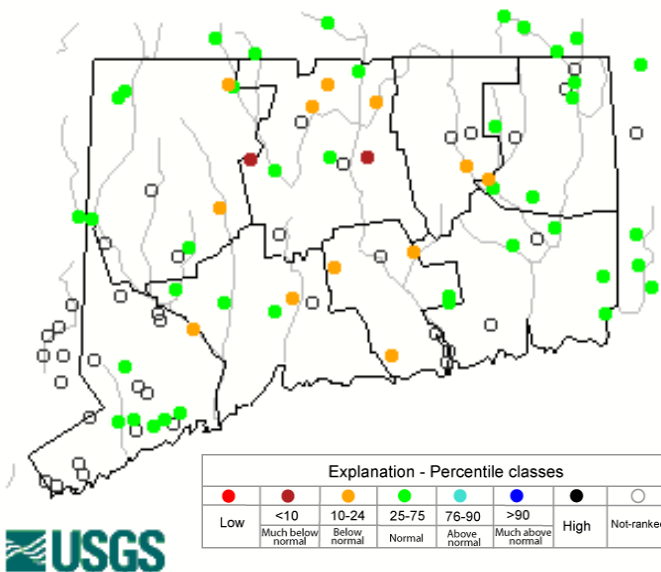
boat launch, or leaving the lakeshore.

WEST BRANCH FARMINGTON RIVER (invasive species alert). *Cymbella janischii* is a close relative of *Didymo* and has been introduced to the West Branch Farmington River (first noticed in 2011). *C. janischii* is native to the Pacific Northwest and not naturally found on the Eastern seaboard.

Currently this type of "Rock Snot" is very abundant and should continue to grow through July. The primary area of the river is from New Hartford upstream to Riverton. Note: *Didymo* is still present primarily in the West Branch above the Still River in Riverton. To help prevent the spread to other rivers and streams, all anglers should take extra care to clean and dry waders that have been in contact with rock snot. We recommend having a pair just for use only in the Farmington River.

Stream flow conditions

Thursday, June 15, 2017 14:30ET



Data in the state graphic to the left are generated by the United States Geologic Survey (USGS) and are available on line at: <http://waterdata.usgs.gov/ct/nwis/rt>. A percentile is a value on a scale of one hundred that indicates the percent of data in the data set equal to or below it. For example streamflow greater than the 75th percentile means only ¼ of the streamflow values were above the value and thus would be considered "above normal". Stream flow between the 25th and 50th are considered to be "normal flows" and those 25th or less are considered to be "below normal".

SPECIES TRIVIA:

Do you know which of these fish are “Native” to Connecticut? Hint, there are 7.

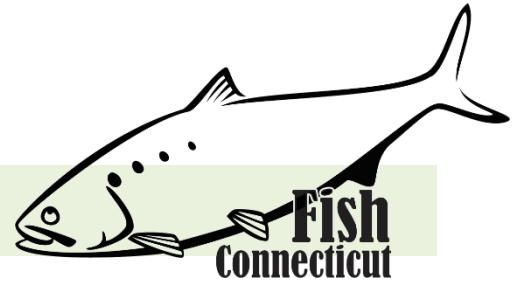


TROPHY FISH AWARD PROGRAM:

DEEP's [Trophy Fish Award Program](#) recognizes angler skill by awarding a bronze pin for your first trophy fish, a silver pin for your fifth trophy fish, and a gold pin for your tenth trophy fish. Angler of the year is awarded at our annual Trophy Fish Award Ceremony.

To see if your fish qualifies check out the criteria on page 13 of the [Angler's Guide](#). If you have caught a trophy fish be sure to fill out the affidavit (page 12 of the Angler's Guide) and submit the required photo(s) and form to us. Good luck!

MARINE FISHING REPORT



Surface water temperatures in Long Island Sound (LIS) are in the low to mid 60's °F. Check out the following web sites for more detailed water temperatures and marine boating conditions:

<http://www.mysound.uconn.edu/stationstat.html>

http://marine.rutgers.edu/mrs/sat_data/?nothumbs=1

<http://www.ndbc.noaa.gov/>

<http://www.wunderground.com/MAR/AN/330.html>

Connecticut State Boundary Line in Long Island Sound. Anglers please note: Though Connecticut has reciprocity with neighboring states (New York, Rhode Island, Maine and Massachusetts), residents of Connecticut are required to have a CT Resident Marine Waters Sport Fishing License to fish in the Marine District.

STRIPED BASS fishing continues to be good around the full strawberry moon. Fifty pound bass have been caught from Milford to Mystic. Striped Bass are in, there are big numbers from Stratford to Execution Rock off Greenwich. A variety of baits and lures are working but best catches this week anglers had used mackerel, bunker, spoons, Mojo rigs - and customers are catching Stripers this week from shore and jetties. Stripers are red hot and they are gulping up Cotton Cordell Pencils at Seaside Park, Silvers Sands State Prk, Burrying Hill in Southport as well as New Haven. Daiwa S P Minnows have also proved outstanding. Norwalk's Calf Pasture Beach Pier has been outstanding late May and expected to continue in June. Striper spots include Hempstead, Mamaroneck, Execution Rocks, Stepping Stone, the Weather Buoy, Can 32A, Pawcatuck River, Mystic River, Thames River, Niantic River, lower Connecticut River (**DEEP Marine Headquarters fishing pier and Dock and Dine**), Black Hall River, New Haven Harbor (Sandy Point), **Housatonic River and Norwalk/Saugatuck Harbor** including the islands. Try trolling bunker spoons on the reefs or better yet toss a chunk of bunker. Sand and blood worms have been working the best for "schoolie" bass. Casting swimming lures (SP Minnow – bone & sand eel color), small jigs (chartreuse color) with twister tails, soft baits, and Kastmasters and other metal lures will all work. The evening/night bite is fantastic with bait, including eels. The top-water fishing continues to be fantastic...Cotton Cordell pencil poppers in bone, blue back or black color.

SUMMER FLOUNDER (fluke) fishing is good and getting better each day with the arrival of squid. Montauk is fishing better than Block Island or Fishers Island. As squid continue to enter Long Island Sound...fishing will only get better. Fluke are loaded up from Westport to Norwalk Islands several doormats 10-12 pounds. Most recent 12-pounder was caught off Compo Beach using a Soro Bucktail w/ a Gulp attached. Also doormats are being caught by using Spro Bucktail tipped with Squid. Mid-sound anglers reported fluke from 2 to 9 lbs being common. Fluke really exploding Norwalk to New Haven with Bucktails tipped w/ Gulp and Spearing in shallow water. Fluke spots include the typical locations: Smithtown Bay, Buoy #26, south shore of Fishers Island (Isabella Beach, Wilderness Point), Napatree Point and along the beach, off the Stonington breakwater, mouth of the Mystic River to Groton Long Point, Thames River channel, Two Tree Island channel, Black Point/Niantic Bay/River, Long Sand Shoal, Westbrook-Clinton area, Falkner Island area, West Haven to Woodmont, New Haven Harbor including

by the breakwaters, off the mouth of the Housatonic River, and around the Norwalk Islands. Since squid are coming in, offering a live one on the bottom (10-40 feet) would be a good move for catching that big slab “doormat” fluke! Try drifting with a white or pink Spro Bucktail jig with a Berkely 3”- 4” Gulp Mullet in chartreuse, white or pink color. Fresh squid and or silversides (spearing) have also been producing. **Minimum size is 19 inches and the daily creel limit is 3 fish per person.** fishing season opens May 17 to September 21. Time to get the boat, and fishing gear ready for some phenomenal early season fluke fishing. [CT Bait & Tackleshop List](#)

BLACK SEA BASS fishing is good and getting better in LIS. There a lot of big sea bass in the sound. BSB are everywhere but they are loaded up at buoy 32-A, and best lure/bait this week has been clams/sand worms. It’s going to be a great year! The early season hot spots are Falkner Island, the Middlegrounds, Buoy 32A, Green Ledge Lighthouse, Cockenoe Islands, Six Mile Reef and from New Haven to Woodmont. Fishing over any deep water structure in 30 to 100 ft around slack tide will produce some trophy-sized “humpbacks”. Fish shallower and you will catch plenty of keeper-sized sea bass. It’s important to continue to move from structure to structure to find these beautiful and awesome eating fish. Remember, **CT black sea bass regulations are as follows...15 inch min. length, 5 fish daily limit from May 1st to December 31st.** Berkely Gulp (swimming mullet) on a jig along with squid and a spinner works great for these “Bucketmouths”.

SCUP (porgy) fishing is good in Long Island Sound. Most of the scup have finished spawning and now are migrating to their feeding grounds throughout the Sound. Sand worms and clams on a high-low rig has been the winning ticket and trophy-size Scup being caught at Greens Ledge Lighthouse and Eaton's Neck. Scup are really coming in thick in Long Island Sound, boats have been hitting them w/ squid, clams and sand worms. Many reports coming in from boaters having great action at Middle Passage, Norwalk Islands and Port Jefferson. Time to plan a trip on the many wonderful party charter boats in CT. [CT Party Boat Association](#). Giant porgies measuring 14-19 inches (“hubcap size”) have been caught! Porgy fishing has also been reported at these shore fishing locations: Todd’s Point, **Sherwood Island State Park**, Rocky Neck State Park, Meigs Point Hammonasset State Park and Fort Trumbull State Park. Locate your favorite [Enhanced Shore Fishing Opportunities](#) for these excellent eating “Reef Slammers”. These “panfish of the sea” are easily caught on sandworms/cut squid or any other small piece of bait. Contact your [local bait and tackleshop](#) for updated fishing information.

WEAKFISH the bite is on and consistent from West Haven to Guilford, especially at night using plastic baits and swimming lures. Other locations to try are...Branford/Guilford/East Haven/West Haven/New Haven Harbor (Sandy Point) over to the Woodmont/Milford/Stratford area along with the Peconics (NY).

BLUEFISH fishing continues to be excellent. The Race, Millstone Outflow, Plum Gut and the north side of Long Island including Gardiners Bay and the Peconics are the early season hotspots. Most of the local Long Island Sound reefs have many harbor-sized blues cruising around them.

STRIPED SEAROBIN fishing is good in LIS for this “hardhead fish with spines and large pectoral fins”. These beautiful and strange looking fish are now very common especially when bottom fishing at many of Connecticut’s shore fishing sites. With many fish measuring over 20

SHORE FISHING SPOTS & TIDE TABLE INFORMATION

To find a saltwater shore fishing spot close to where you live, go to the following website:

<http://www.lisrc.uconn.edu/coastalaccess/>.

For **Enhanced Opportunity Shore Fishing** sites and other fishing information including a site map go to the following website <http://www.depdata.ct.gov/maps/saltwaterfish/map.htm>.

Please see page 64 of the [2017 CT Angler’s Guide](#) for CT tide information.

inches, 3 pounds and “barking up a storm” (grunting noise they make when handling them). They love sandworms, squid and any live or dead bait. They are also very good to eat. Please be careful when handling them...be mindful of their spines located on top of their head and gill cover.

HICKORY SHAD fishing is fair in the lower Connecticut River by the DEEP Marine Headquarters fishing pier and by Dock and Dine (Old Saybrook). Connecticut tarpon (hickory shad) can be found mixed in with schoolie striped bass. Flood or ebb tide is best and lures of choice are a willow leaf (silver), Kastmaster (single hook), small plastic jigs (white or chartreuse), and or shad darts in various colors.

WHITE PERCH fishing is improving in the coves along the Connecticut shoreline. White perch have finished spawning and moving to key feeding locations. Perch spots include the Pawcatuck River, Mystic River, Thames River, upper Niantic River, lower Connecticut River (DEEP Marine Headquarters fishing pier), Black Hall River, Lieutenant River, North/South Cove and Hamburg Cove. Shrimp and small worms (small piece of sand worm) are the keys to success. Fish the coves and back bays (slack water).

NOTABLE CATCHES –

<i>Species</i>	<i>Length (in.)</i>	<i>Weight (lbs)</i>	<i>Angler</i>
Striped Bass	49"	46 lbs 12 oz.	Connor Gerardi
Striped Bass	51"	C&R	Juan M.
Weakfish	31"	9 lbs 14 oz.	Albert Zuppe
Weakfish	30"	8 lbs 13 oz.	Albert Zuppe
Weakfish	27.25"	6 lbs 6 oz.	Jennifer Zuppe
Clearnose Skate	39.75"	5 lbs 2 oz.	Albert Zuppe
Clearnose Skate	40"	5 lbs 9 oz.	Jennifer Zuppe
Striped Searobin	21"	3 lbs 9 oz.	Jennifer Zuppe
Striped Searobin	19.5"	3 lbs 6 oz.	Albert Zuppe
Black Sea Bass	22.5"	4 lbs 1 oz.	Bryan Bottone

CAUGHT A TROPHY FISH - MARINE TROPHY FISH AWARD PROGRAM AFFIDAVIT

The Connecticut Department of Energy and Environmental Protection is an Affirmative Action/Equal Opportunity Employer that is committed to complying with the requirements of the Americans with Disabilities Act. Please contact us at (860) 418-5910 or deep.accommodations@ct.gov if you have a disability and need a communication aid or service; have limited proficiency in English and may need information in another language; or if you wish to file an ADA or Title VI discrimination complaint.

DEEP WEEKLY Fishing Report



Connecticut Department of
ENERGY & ENVIRONMENTAL PROTECTION

79 Elm Street, Hartford, CT 06106
www.ct.gov/deep